

Anti-NKP30 hlgG1 Antibody(BJM-0411)

Product information

GM-59269AB-10	10 µg
GM-59269AB-100	100 µg
GM-59269AB-1000	1 mg

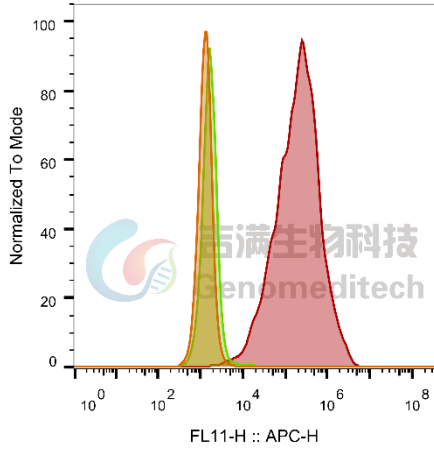
Antibody Information

Species Reactivity	Human; Cynomolgus
Clone	BJM-0411
Source/Isotype	Monoclonal human IgG1, κ
Application	Flow cytometry; Activation assay ;
Specificity	Detects NKP30
Gene	NKP30
Other Names	NCR3, 1C7, CD337, LY117, MALS, NKCR3
Gene ID	259197(human); 102133932(Cynomolgus);
Background	NKP30 is a natural killer cell receptor, belonging to the NCR family. It plays a crucial role in natural killer cells (NK cells) by interacting with ligands on the surface of tumor cells, participating in the regulation of NK cell activation and cytotoxicity. Research on NKP30 can help us gain a deeper understanding of the immune regulation mechanisms of NK cells and their potential applications in tumor immunotherapy. In cancer immunotherapy research, the activation of NKP30 can enhance the killing of tumor cells by NK cells, making it a promising target for future cancer treatments.
Storage	Store at 2-8°C short term (1-2 weeks).Store at ≤ -20°C long term. Avoid repeated freeze-thaw.
Formulation	Phosphate-buffered solution, pH 7.2.
Endotoxin	< 1 EU/mg, determined by LAL gel clotting assay

Data Examples

Flow cytometry

Cynomolgus_NKP30 CHO-K1 Cell Line (Catalog # GM-C33009) was stained with Anti-NKP30 hlgG1 Antibody(BJM-0411) (Catalog # GM-59269AB) or isotype control antibody, followed by anti-Human IgG APC-conjugated Secondary Antibody.



SampleID	Geometric Mean : FL11-H
CHO-K1 anti-NKP30+APC-2nd Ab	1308
CHO-K1 Cyno_NKP30 H_IgG+APC-2nd Ab	1697
CHO-K1 Cyno_NKP30 anti-NKP30+APC-2nd Ab	189043

Fig. FACS

Activation assay

Serial dilutions of Anti-NKP30 hlgG1 Antibody(BJM-0411) (Catalog # GM-59269AB) or isotype control antibody were added into H_NKp30 Reporter Jurkat Cell Line(Catalog # GM-C29776). EC50 for this effect was 1.718 $\mu\text{g/mL}$.

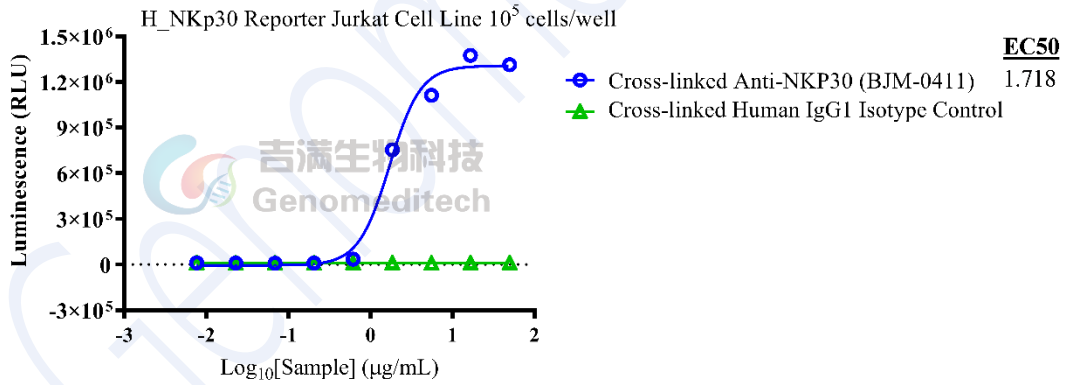


Fig. assay